



ACCESSIBILITY GUIDE



CONTENTS

Ride Access Pass	1
Facilities & Services	2
Catering & Retail Outlets	3
Rides & Attractions	4
- Accessibility Key	5
- Dino & Farm Park	6-8
Enjoy Your Day!	9

ACCESS AT GULLIVER'S

Gulliver's Theme Park Resorts welcomes visits from guests with access requirements.

We work closely with Nimbus Disability and the National Register of Access Consultants to continuously improve access solutions within resorts.

Many of our team members have received disability awareness training which includes understanding of The Equality Act and disability etiquette to ensure guests have access to the requirements to be able to enjoy a day at Gulliver's Dinosaur & Farm Park!



RIDE ACCESS PASS

Guests with particular additional needs who are unable to queue may be eligible for a ride access pass. This would allow them and up to three accompanying helpers access the ride via the exit area for ease of access.

In order to offer the most inclusive experience for all visitors, there are a limited number of Ride Access Passes available for each operational date. A Ride Access Pass must be reserved online, in advance of your visit. In addition to an online reservation, you'll need to bring evidence of eligibility with you.

Evidence of eligibility can be any of the following:

- A document issued by a medical Professional indicating diagnosis or impact of Diagnosed condition.
- A Nimbus issued Access Card containing the "Standing and Queuing" symbol or The "crowd" symbol.

If you do not bring one of the above documents, we cannot provide you with a Ride Access Pass.

Blue Badges, DLA and PIP letters are not accepted as evidence of eligibility for the Ride Access Pass.



FACILITIES & SERVICES



First Aid

All Gulliver's Theme Parks have dedicated first aid centres that are listed on the resort map. Park team are always around and are trained to help prior to a medical professional arriving at the scene.



Baby Change

Clean and dry baby change facilities can be found in each area of the park.



Dogs

Assistance dogs are welcome on site but, for safety reasons, they are not permitted on any of the rides. A member of your party must stay with your dog while you are using any of the rides.



Toilets

A number of accessible toilets are labelled clearly on the park map. Accessible toilets are in the following locations:

- Main Plaza
- Farmhouse Restaurant
- Raptor Restaurant



Wheelchairs

Wheelchairs are available to hire with a refundable deposit at guest relations by the main entrance.



Lockers

Lockers are available on a first come first served basis. They are located by The Main Entrance (additional cost).



Car Park

All car parks at Gulliver's are free. A number of accessible car parking spaces are provided on tarmac by the entrance.



CATERING & RETAIL OUTLETS

Over half of our catering and retail outlets are fully accessible to wheelchair users here at Gulliver's World. However, our friendly team are always ready to assist with any difficulties you may encounter. Please, do not hesitate to ask for assistance whenever required.

Catering units that are fully accessible:

- Farmhouse Restaurant
- Raptor Restaurant

Retail outlets that are fully accessible:

- The Main Shop (main entrance)

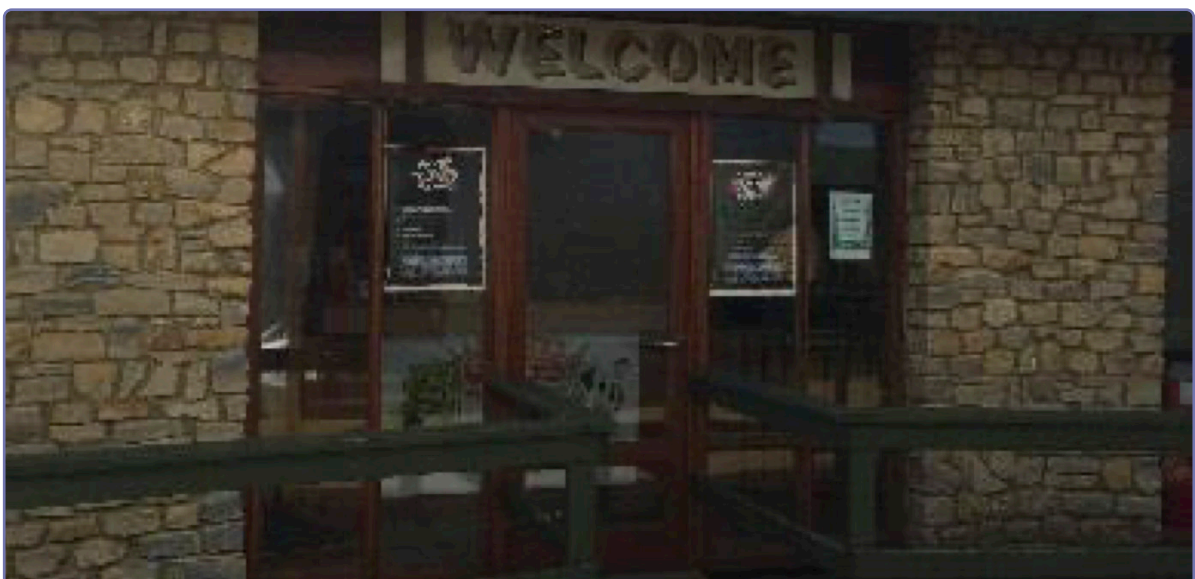
Guests with allergens and specific dietary requirements should ask for advice from a member of our Food and Beverage Management Team to ensure you are receiving the most accurate and up to date information.

The Main Park Entrance

The main park entrance is fully accessible.

Any guests who are in a wheelchair can use the entrance to access the park.

If you require assistance with gaining entry to the resort, our friendly team will always be around in the



RIDES & ATTRACTIONS

If you are the carer of a guest who is unable to read, you should read the guide and all ride safety notices on their behalf.

If you are a carer reading this on behalf of a guest, please note that the decision whether the care recipient can ride alone or should be accompanied is solely yours.

Our park team are not trained to judge the physical suitability of an individual.

We will assume that the person in care is physically capable of going on to a ride (accompanied or otherwise) if allowed to do so by their carer.

Our staff are not trained to lift guests in or out of rides.



ACCESSIBILITY KEY

Each ride & attraction is listed to help you, or a carer, make an informed decision on whether the accessibility, restrictions & requirements are suitable before entering a ride or attraction. Each ride & attraction will be clearly broken down to list the requirements and accessibility. This information will also be available via the park map, online or through various signage around the theme park.

Each ride and attraction will be labelled with the following icons:

Requirements

All rides & attractions will need the user to have either Upper Body Control, Lower Body Control or, in some cases, Both!

These are labelled clearly with the following icons:



Upper Body



Lower Body Control

Accessibility

This will feature a brief description of any accessibility requirements that will be needed, such as maximum and minimum height.

Useful Information

A brief description of the entrance, exit or any other notable terrain outliers that could potentially be challenging for an individual with additional needs. Any difficulties that need to be considered before accessing a certain ride or attraction will be described so that you, or your carer, can make an informed decision. There will also be images as a visual aid.



DINO & FARM PARK

Dino & Farm Park is home to 32 animatronic dinosaurs, plus dinosaur rides, a petting zoo & kids' play areas!

Tree Top Trail



No height restrictions.



- Wheelchair to be stored at the exit.
- There is one small ramp to traverse.

Reptile Centre



Under 90cm cannot ride. Under 120cm accompanied by an adult.

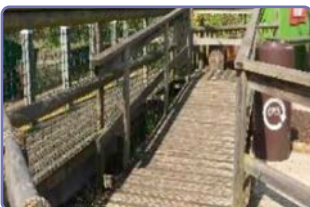


Upper Body Control required.



- Wheelchair to be stored at the entrance.
- There are two steps into the carriage.

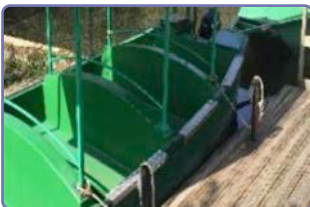
Lost World Tours



Under 140cm accompanied by an adult.



Upper Body Control Required.



- Wheelchair to be stored at the exit.
- May be difficult to enter the boat due to the step down.

Sky Tours Observation Tower



Under 120cm accompanied by an adult.



Upper Body Control Required.



- Wheelchair to be stored at the entrance.
- There is a step into the tower.

Tractor Ride



Under 120cm accompanied by an adult.



Upper Body Control required.



- Wheelchair to be stored at the exit.
- There is one step onto the ride.

Climbing Wall



Under 90cm cannot use this attraction.



Upper Body Control Required.

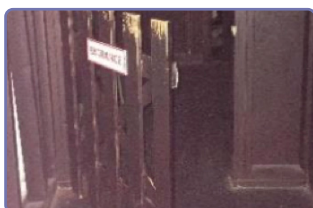


- A strenuous vertical climbing wall that requires both upper and lower body strength.

Cookery School



No height restrictions.



- A fully wheelchair accessible attraction.

Animal Barn



No height restrictions.



- A fully wheelchair accessible attraction.



ENJOY YOUR DAY!

If further information is required please speak to a member of our friendly team either on site at the Theme Park or by using Gully's Hotline (01925 444 888)

We hope that you enjoy your day here at Gulliver's Dinosaur & Farm Park!





GULLIVERSFUN.CO.UK



WHERE TO FIND US:

Gulliver's Land / Dino & Farm Park, Milton Keynes – MK15 0DT
M1 Junction 14, 60 Minutes from London & Birmingham

